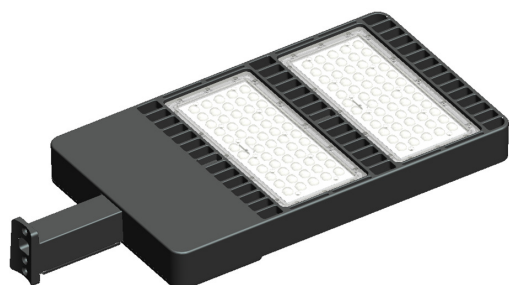


LED SHOEBOX PARKING LIGHT

E2-SB-200W-X (200W), E2-SB-300W-X (300W)



Color: Dark Bronze **Option:** Microwave Motion sensor

Project Name:

Catalogue Number:

Fixture Schedule:

Comments:

Specifications

Light Output	21,850/29,002 LM	Frequency	50-60 Hz
Efficacy	117.2/98.85 LPW	THD	10.49/10 %
Wattage	200/300 W	L70 Lifespan	50,000 hours
Color Accuracy (CRI)	87/71.9	IP Rating	IP65
Kelvin (CCT)	3,000-5,000 K	Beam Angle	Type: 3 or 5
Power Factor	0.92/0.93	Dimming Compatible	Yes
Working Environment	-22° F~113° F	Mercury Content	No Hg
Input Voltage	100-277 or 480 V	Lens	Polycarbonate

Product Description

The E2 Lighting LED Shoe Box Parking Light is the ideal LED solution well-suited for distributing light in parking lots, streets and wall areas. Adjustable installation angles from -90~+90° with slip-fitter mount (other mounts available). Uses high-efficiency Samsung LED chips to produce over 100 LPW. High-quality UL Driver with a 5-year warranty. Standard finish is dark bronze polyester powder finish with other architectural colors available. In addition to diminishing energy costs, the fixtures virtually eliminate maintenance expenses with an L70 lifetime of 50,000 hours. UL classified/recognized, UL listed, DLC listed and RoHS compliant.

Product Features

- Adjustable installation angles from -90~+90 degrees with slip-fitter mount (other mounts available)
- Hollowed out, sleek heat sink design offers lighter weight lamp and lowers thermal resistance
- Highly efficient Samsung LED chips generate over 100 LPW High-quality UL driver with 5-year warranty
- LM-79/80 data available
- Long life LEDs lasting up to 50,000 hours
- DLC and UL wet location listed

Applications

- Primary use: Outdoor Pole/Arm-Mounted Area and Roadway Luminaires
- Architectural Lighting, Bridge, Car Park, Garden, Highway, Highway Lighting, Mining, Park, Petrol Station, Pooling Lighting, Sport Lighting, Sport Yard, Square, Square Lighting, Tunnel Lighting

Available Options

- Color temperatures ranging from 3,000-5,000K
- Multitude of mounting adapter options
- Light distribution, voltage, dimmable, photocell and shell color
- Please note: 24 and 48-Watt LED offers a UL driver, whereas 80, 100, 150, 200 and 300-Watt options offer a Mean Well driver

Cautions

- Installation by a licensed electrician only.
- Product failure caused by misuse, modification or power surges are not covered under warranty.
- Actual product performance may differ as a result of end-user environment and application.
- Input voltage may vary depending on photocell configuration.

Warranty

E2 warrants that our LED products will be free from defects in materials and workmanship for a period of five (5) years from the date of delivery to the end user, including coverage of light output, color stability, driver performance and fixture finish. Please see our full warranty terms located at www.e2lightingusa.com.

Technical Support

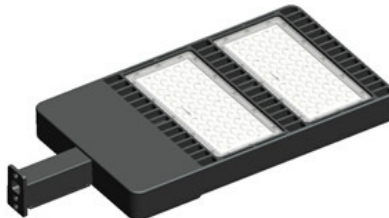
Need help? Please contact our technical support team for assistance at (213) 270-1938.

Bracket Types

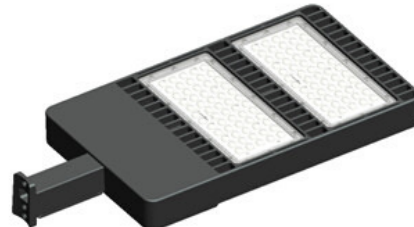
Type A



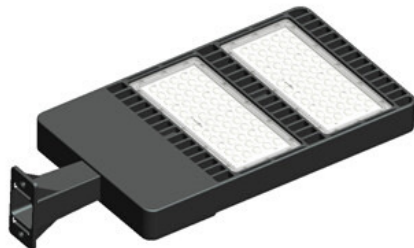
Type B



Type C



Type D



Type E

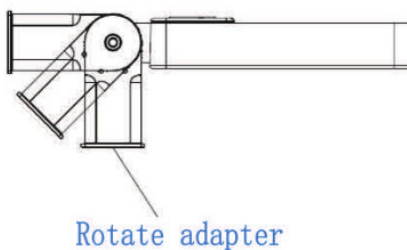
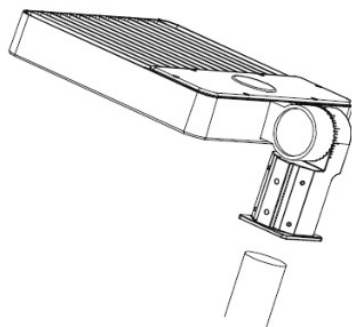


Dimensions and Weight Info

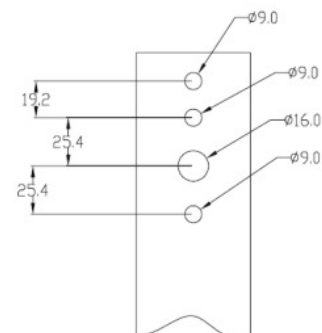
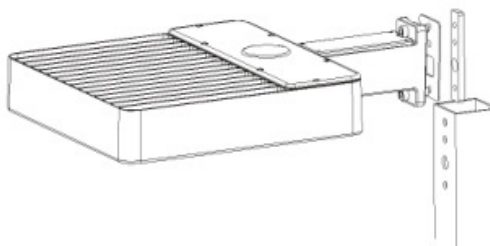
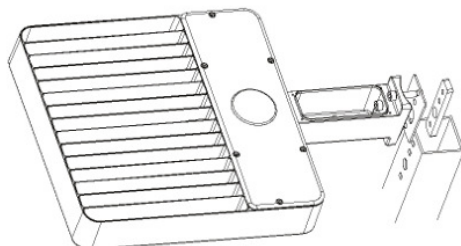
Type A:	26.37x13.50x6.92in	22.04lbs
Type B:	28.85x13.50x3.54in	22.04lbs
Type C:	29.13x13.50x3.54in	21.16lbs
Type D:	28.85x13.50x6.92in	22.04lbs
Type E:	29.29x13.50x6.92in	22.04lbs

Installation

Type A: Pole Diameter: ϕ 60MM



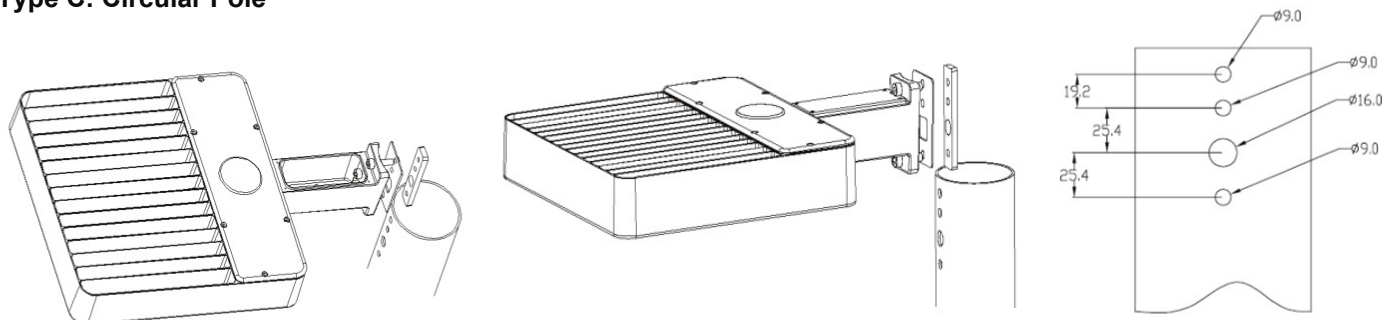
Type B: Rectangular Pole



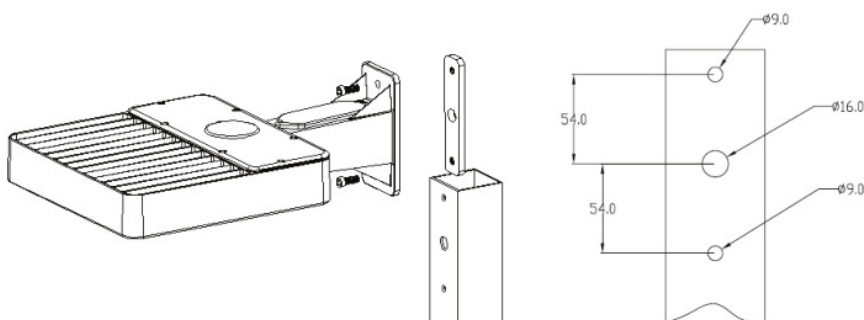
(Continued on next page)

Installation

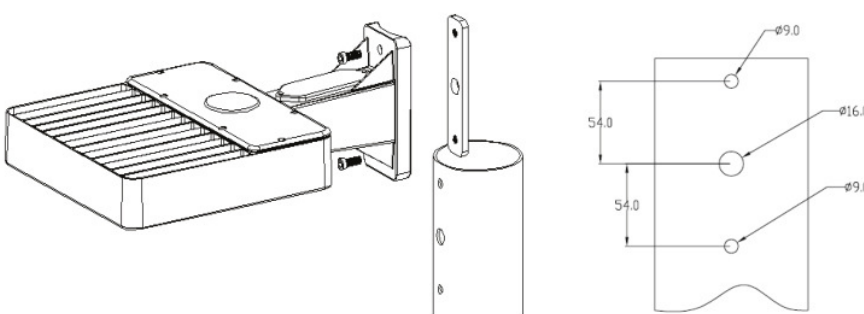
Type C: Circular Pole



Type D: Rectangular Pole



Type E: Circular Pole



Ordering Matrix (Example=E2-SB-200W-50-5-UV-A-N-P-BL)

*MS= Motion sensor

Model	Watts	CCT	Light Distribution	Voltage	Mounting Adapter	Dimming	Photocell	Shell Color
E2-SB-200W	200 W	30=3000K	3=Type 3	UV=100~277 V	A=Slip fitter	N=No Dimming	NP=No Photocell	BR=Bronze
		35=3500K	5=Type 5	UH=480 V	B=Square pole	D=1~10V Dimming	P=Photocell	BL=Black
E2-SB-300W	300 W	40=4000K			C=Round pole			WH=White
		45=4500K			D=Square pole			
		50=5000K			E=Round pole			