

Distributed by: **LED Hawaii**

H-SERIES

91-335 Kauhi St. Kapolei, HI 96707 / E: sales@ledhawaii.com / Phone: (808) 306-7873



LM-79
LM-80

IP66
IK10



CE CB

RoHS
Compliant



5 YEAR
WARRANTY

LED HIGH BAY LIGHTS



SERIES-H

LED HIGH BAY LIGHTS

PRODUCT CATALOG



Overview

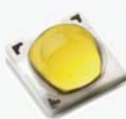
Revolutionary built-in driver design with extremely simple and clean appearance.

The ZGSM® H-Series LED high bay lights are using highly luminous-efficient LUMILEDS® LUXEON TX luminous source and highly reliable HLG Series Mean Well® driver. Provide 5 years warranty on luminaire.

Color Options

● Silver Gray

LED LUMINOUS SOURCE



LUXEON
NEVER BEFORE POSSIBLE
Greater than 135lm/W high efficacy, illumination grade LED light source.



LED DRIVER



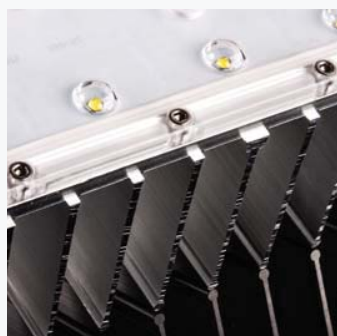
High-end Mean Well HLG Series LED driver, optimal stability, performance and lifespan.



LED MODULE



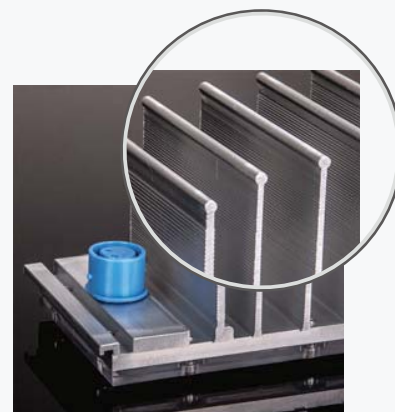
Exquisite design with powerful thermal dissipation and IP67 waterproof performance.



Overall stainless steel screws adopted.



Black & Silver Color Modules.

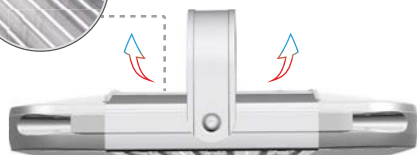


Cylindrical edge design, avoid cut risk.

XTREME LUMINAIRE DESIGN



Reasonable heat sink design, not only keep ventilation but also avoid laceration.



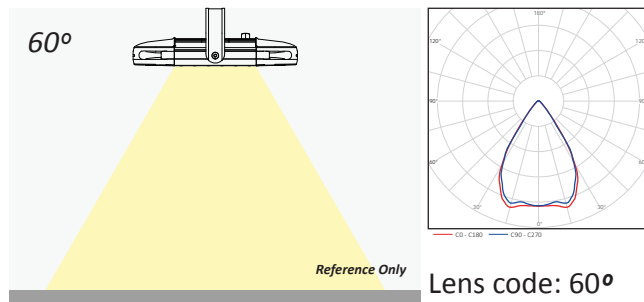
Gaps between each module are increased heat dissipation speed and solved the problem of dust deposition.



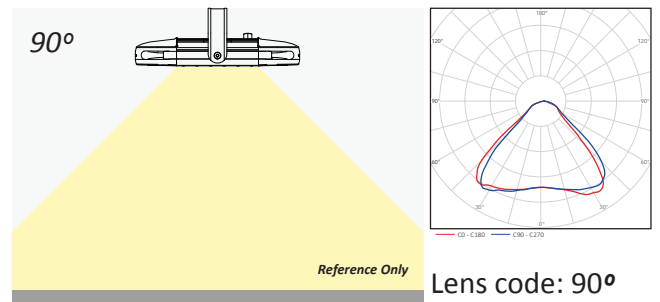


Suspended Mounting

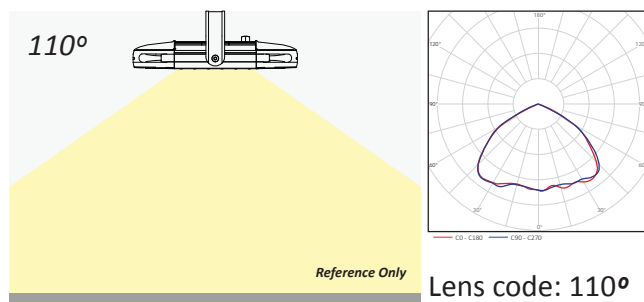
Optics



Applications:
Shelf Aisle | High Hall | High Workshop



Applications:
Warehouse | Workshop



Applications:
Warehouse | Workshop | Gas Station



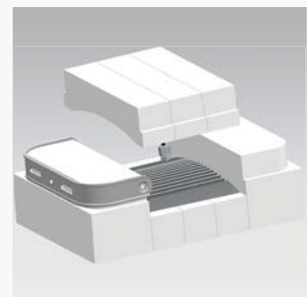
Professional lens design with 60°, 90° and 110° optional.



Use M16 waterproof connector, avoid hard power damage.



full aluminum made, sufficient heat dissipation area also no corrosion worries.



A special tailor-made packaging designed to guarantee the highest protection of the lamp.



Use waterproof connector for internal wiring, safe, convenient & fast.



Innovative pluggable connector, clean & efficient.

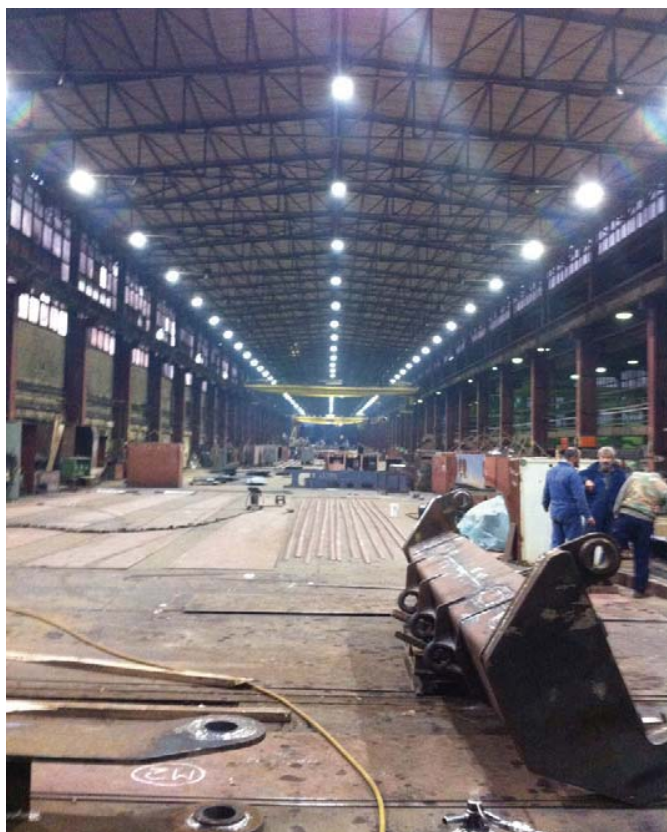


UL standard connection.



Exquisite and enhanced full aluminium bracket.

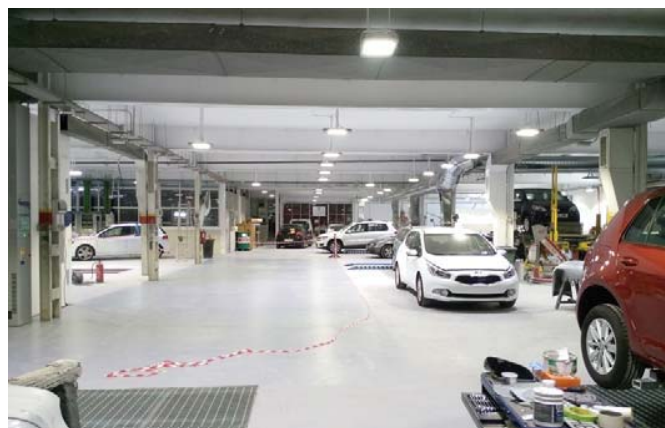
DETAILED FEATURES



- for High Bay Applications, Croatia



- for Shelf Aisle(Series-D), Hungary



- for Low Bay Applications, Spain



- for Area Lighting(Series-E), Italy



- for Gas Station(Series-D), Colombia

SERIES-H

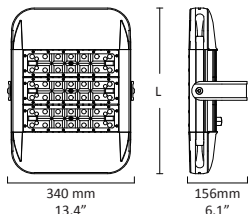
LED HIGH BAY LIGHTS

PRODUCT CATALOG



Product	ZGSM-GCD40H	ZGSM-GCD80H	ZGSM-GCD120H	ZGSM-GCD160H	ZGSM-GCD200H	ZGSM-GCD240H
Nominal Wattage	40W	80W	120W	160W	200W	240W
Drive Current	850 mA	850 mA	850 mA	850 mA	850 mA	850 mA
Number of Modules	1	2	3	4	5	6
Input Voltage	100-240V / 277V AC 50/60Hz	100-240V / 277V AC 50/60Hz	100-240V / 277V AC 50/60Hz	100-240V / 277V AC 50/60Hz	100-240V / 277V AC 50/60Hz	100-240V / 277V AC 50/60Hz
Max. Current @ 120V	0.41 A	0.82 A	1.23 A	1.65 A	2.06 A	2.47 A
Max. Current @ 208V	0.24 A	0.47 A	0.71 A	0.95 A	1.19 A	1.42 A
Max. Current @ 240V	0.21 A	0.41 A	0.62 A	0.82 A	1.03 A	1.23 A
Max. Current @ 277V	0.18 A	0.36 A	0.53 A	0.71 A	0.89 A	1.07 A
Operating Temperature	-40 °C to +50 °C	-40 °C to +50 °C	-40 °C to +50 °C	-40 °C to +50 °C	-40 °C to +50 °C	-40 °C to +50 °C
Power Factor (PF)	> 0.95	> 0.95	> 0.95	> 0.95	> 0.95	> 0.95
Total Harmonic Distortion (THD)	< 20%	< 20%	< 20%	< 20%	< 20%	< 20%
Lumen Output (+/- 5%)	4400 lm	8800 lm	13200 lm	17600 lm	22000 lm	26400 lm
Optic	60°, 90°, 110°	60°, 90°, 110°	60°, 90°, 110°	60°, 90°, 110°	60°, 90°, 110°	60°, 90°, 110°
CRI	Minimum 70 CRI	Minimum 70 CRI	Minimum 70 CRI	Minimum 70 CRI	Minimum 70 CRI	Minimum 70 CRI
CCT	3000K 4000K 5000K 5700K	3000K 4000K 5000K 5700K	3000K 4000K 5000K 5700K	3000K 4000K 5000K 5700K	3000K 4000K 5000K 5700K	3000K 4000K 5000K 5700K
Rating	IP66, IK10	IP66, IK10	IP66, IK10	IP66, IK10	IP66, IK10	IP66, IK10
Heat Radiator	Anodized Aluminum	Anodized Aluminum	Anodized Aluminum	Anodized Aluminum	Anodized Aluminum	Anodized Aluminum
Lens	PC (UV resistance)	PC (UV resistance)	PC (UV resistance)	PC (UV resistance)	PC (UV resistance)	PC (UV resistance)
Packaging Type	1 unit /ctn.	1 unit /ctn.	1 unit /ctn.	1 unit /ctn.	1 unit /ctn.	1 unit /ctn.

DIMENSION DATA



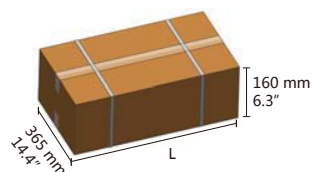
Number of Modules	1	2	3	4	5	6	
"L" Length	293 mm 11.5"	336 mm 14.4"	439 mm 19.4"	512 mm 20.2"	585 mm 23.0"	658 mm 26.0"	
Weight	3.1 kg 6.8 lbs.	4.3 kg 9.5 lbs.	5.2 kg 11.5 lbs.	6.0 kg 13.2 lbs.	7.0 kg 15.4 lbs.	7.8 kg 17.2 lbs.	

LUMEN MAINTENANCE

Ambient Temperature	TM-21 Lumen Maintenance (60,000 Hours)	Theoretical L70 (Hours)
25 °C	96.50%	478,000
40 °C	97.22%	531,000
50 °C	96.16%	373,000

*Visit <http://zgsm-china.com/product/Lighting/category/high-bay-lights/series-h> for TM-21 Report

PACKAGING DATA



Number of Modules	1	2	3	4	5	6	
"L" Length	345 mm 13.6"	415 mm 16.3"	485 mm 19.1"	560 mm 22.0"	635 mm 25.0"	705 mm 27.8"	
Weight	3.9 kg 8.6 lbs.	5.1 kg 11.2 lbs.	6.1 kg 13.4 lbs.	7.0 kg 15.4 lbs.	8.1 kg 17.9 lbs.	9.0 kg 19.8 lbs.	

CERTIFICATION



UL/cUL Wet Location Listed
DesignLights Consortium® Qualified

LM79 / LM80 Compliant
IP66 / IK10 Rated

CE / ROHS / GS / CB / SAA
IOS9001, ISO14001



Dimming

Dimming functions are supported by optional

† Three in One (1-10V DC or PWM Signal or Resistance)

† Output constant current level can be adjusted through out put cable by connecting a resistance or 1 ~ 10Vdc or 10V PWM signal between DIM+ and DIM-.

† Please DO NOT connect "DIM-" to "-V".

† Reference resistance value for output current adjustment (Typical)

Resistance value	10KΩ	20KΩ	30KΩ	40KΩ	50KΩ	60KΩ	70KΩ	80KΩ	90KΩ	100KΩ	OPEN
Percentage of rated current	10%	20%	30%	40%	50%	60%	70%	80%	90%	100%	95% ~ 108%

† 1-10V dimming function for output current adjustment (Typical)

Dimming value	1V	2V	3V	4V	5V	6V	7V	8V	9V	10V	OPEN
Percentage of rated current	10%	20%	30%	40%	50%	60%	70%	80%	90%	100%	95% ~ 108%

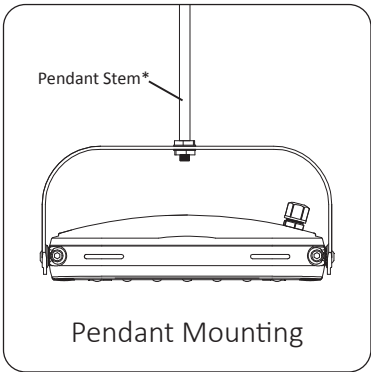
† 10V PWM signal for output current adjustment (Typical): Frequency range: 100Hz ~ 3KHz

Resistance value	10%	20%	30%	40%	50%	60%	70%	80%	90%	100%	OPEN
Percentage of rated current	10%	20%	30%	40%	50%	60%	70%	80%	90%	100%	95% ~ 108%

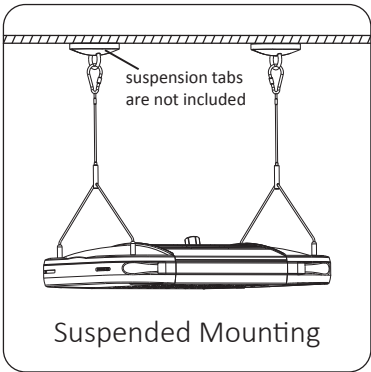
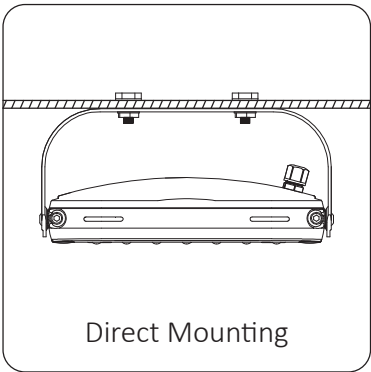
Time Control Dimming

Time control dimming function is supported by optional - Contact rep for Details

Supported Installation Methods



*Pendant Stem can not be the soft material.



AFTER-SALE SERVICE

*Damage by thunder stroke over 4KV(L,N against FG) /2KV(L against N) will not covered by warranty based on IEC61000-4-5.

The product (LED lighting equipment, electrical, electronic equipment) should not be placed in municipal waste. Check local regulations for disposal of electronic products.

- Features and specifications are subject to change without notice.
- The product color may be different with actual due to discrepancy of camera or screen settings.
-

